

CHRISTOPHER CUTTS GALLERY



# DAISUKE TAKEYA NO MAN'S LAND

November 30, 2023 - January 18, 2024

21 Morrow Avenue, Toronto, Ontario M6R 2H9

1 (416) 532 5566

[info@cuttsgallery.com](mailto:info@cuttsgallery.com)

[@cuttsgallery](https://www.instagram.com/cuttsgallery)

[cuttsgallery.com](http://cuttsgallery.com)

CHRISTOPHER CUTTS GALLERY

# DAISUKE TAKEYA NO MAN'S LAND

November 30, 2023 - January 13, 2024

Daisuke Takeya's "No Man's Land" is his 5th solo exhibition with the gallery, presenting a new series distinct from, and yet analogous to, the parts of his practice that have been exhibited with the gallery over the past 20 years. Takeya's previous show at the CCG, "Breaking the Waves," was connected to the aftermath of the devastating 2011 Great East Japan Earthquake, tsunami, and Fukushima Daiichi nuclear accident. This exhibition picks up where he left off, revisiting Fukushima's 'no man's lands' a decade after the accident, through the lens of a global pandemic.

Two of the contemplative portraits in the show were painted in the desolate landscapes of the coastal areas of the Fukushima Prefecture that had been abandoned due to radiation, with the local population slowly returning to their homes in recent years. The remaining six paintings are set in different countries, in environments left empty due to health advisories during the COVID pandemic. In a time of complete isolation, Takeya traversed borders and restrictions to capture these life-size portraits of women from around the world.

In contrast to his previous portrait series, these paintings depict the subjects within specific but unrecognizable settings, anonymizing the sitter's identity and their location. The series travels through indistinguishable environments and nameless subjects to examine human connection in a time of enforced separation.

"No Man's Land" is characterized by Takeya's masterful rendering of skin and landscape, continuing his ongoing "struggle of technique," balancing the tactile texture of thick coats of oil paint and the minuscule details that have come to define his canvases.

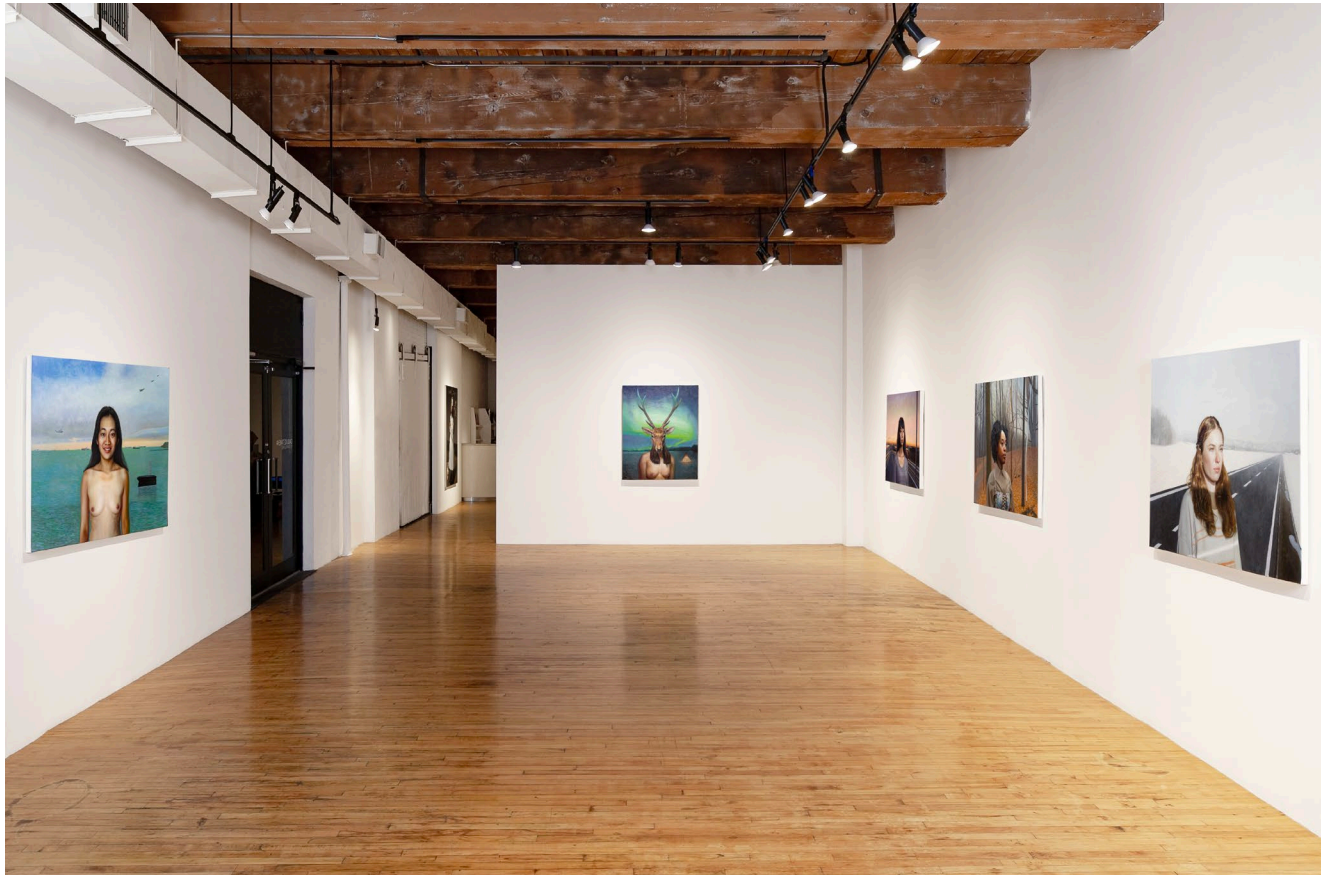
Having been trained in figurative painting at the New York Academy of Art, Takeya's women subjects reflect the changing landscape of the *bijinga* genre in 20th-century Japan, which saw polarized reactions to the subject matter of beautiful women (*bijin*) being painted in the *yoga* (western) style. But Takeya's *bijins* do not reflect the ideal of one empire's standardized gender dynamics, instead, they represent a postcolonial exploration of the classical genre – international, diverse, and unsystematic.

This series follows his previous connection-based portraits series, *eyes of a child*, in which Takeya painted 200 of his students and recreated their artwork to investigate the 'origin of creativity,' and his series documenting survivors of human trafficking and sex slavery committed by the Imperial Japanese Army during WWII.

In addition to the new portraits, "No Man's Land" features a condensed survey of Takeya's 20 years with the gallery, including pieces from the *Everybody Loves You* series - diptychs of Torontonians juxtaposed with the Manhattan skyline. The North Gallery will feature two large-scale paintings from the *Kara* series that he is perhaps most known for, expansive abstract skies with diminutive city/landscapes at the bottoms of the canvases. *Memoir of Fukushima*, from the 2017 exhibition "Breaking the Waves" will also be on display.

"No Man's Land" will run from November 30th, 2023 – January 18th, 2024 at the Christopher Cutts Gallery, 21 Morrow Avenue (near Dundas and Roncesvalles) in Toronto. For more details and all media inquiries, please contact 416-532-5566 or [info@cuttsgallery.com](mailto:info@cuttsgallery.com).

# CHRISTOPHER CUTTS GALLERY



south gallery, north wall



DAISUKE TAKEYA

*Untitled*

2022

oil on canvas

48 x 38 inches (122 x 96.5 cm)

# CHRISTOPHER CUTTS GALLERY



south gallery, east wall



DAISUKE TAKEYA

*At The Bridge*

2022

oil on canvas

38 x 48 inches (96.5 x 122 cm)



DAISUKE TAKEYA

*Winter Tale*

2023

oil on canvas

38 x 48 inches (96.5 x 122 cm)



DAISUKE TAKEYA

*Snow Country*

2023

oil on canvas

38 x 48 inches (96.5 x 122 cm)



DAISUKE TAKEYA

*No Man's Land*

2023

oil on canvas

38 x 48 inches (96.5 x 122 cm)

# CHRISTOPHER CUTTS GALLERY



south gallery, south wall



DAISUKE TAKEYA

*A Forest*

2021

oil on canvas

39.5 x 48.5 inches (100.5 x 123 cm)



DAISUKE TAKEYA

*Untitled study of an anonymous woman*

2021

oil on canvas

12 x 12 inches (30.5 x 30.5 cm)

CHRISTOPHER CUTTS GALLERY



south gallery, west wall



DAISUKE TAKEYA  
*A Cumulonimbus*  
2023  
oil on canvas  
38 x 48 inches (96.5 x 122 cm)



DAISUKE TAKEYA

*The Whale*

2023

oil on canvas

38 x 48 inches (96.5 x 122 cm)

# CHRISTOPHER CUTTS GALLERY



north gallery, north wall

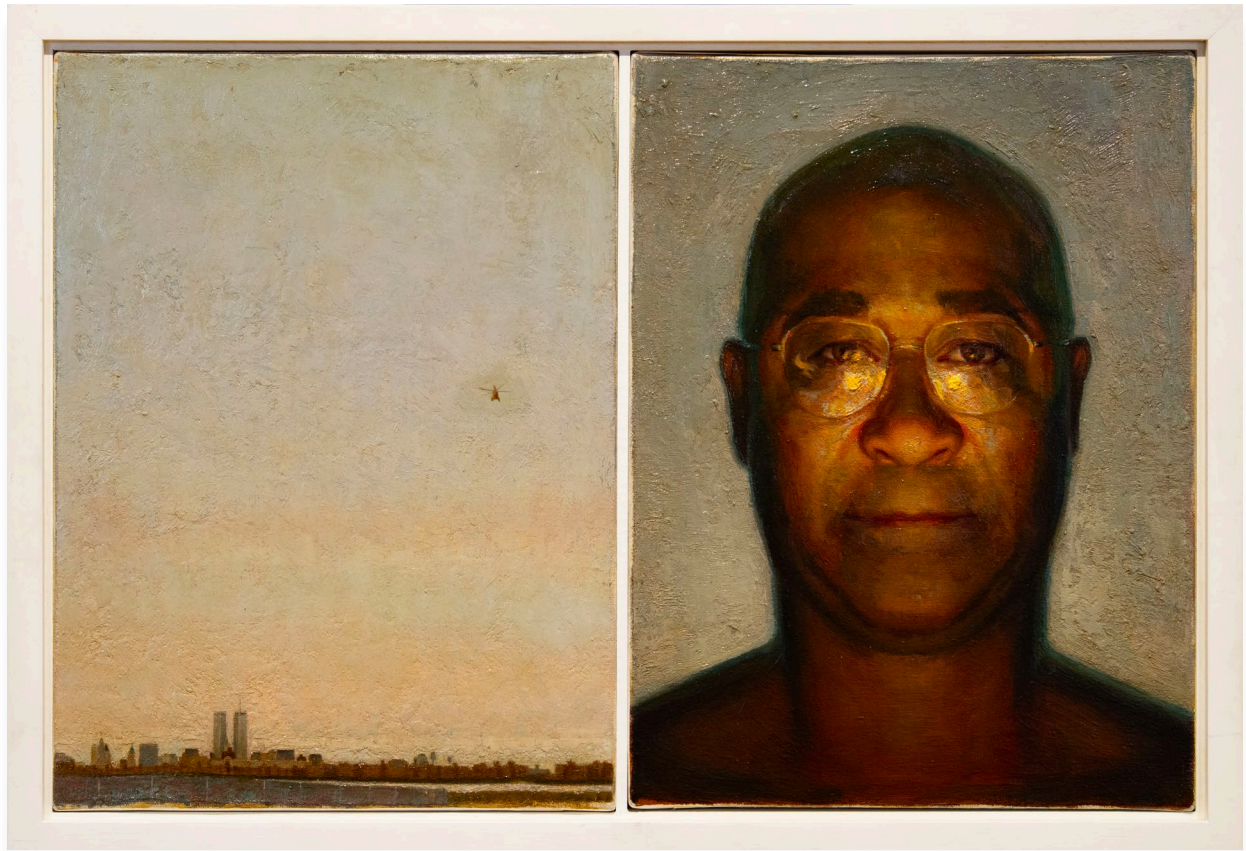


DAISUKE TAKEYA  
*Untitled (Niagara Falls)*  
2011  
oil on canvas  
72 x 48 inches (182.9 x 121.9 cm)

# CHRISTOPHER CUTTS GALLERY



north gallery, east wall



DAISUKE TAKEYA

*Micki Loves You*

2000

oil on canvas

24 x 16 inches (61 x 40.5 cm)



DAISUKE TAKEYA

*Richard Loves You*

2000

oil on canvas

16 x 24 inches (40.5 x 61 cm)



DAISUKE TAKEYA

*Sarah Loves You*

2000

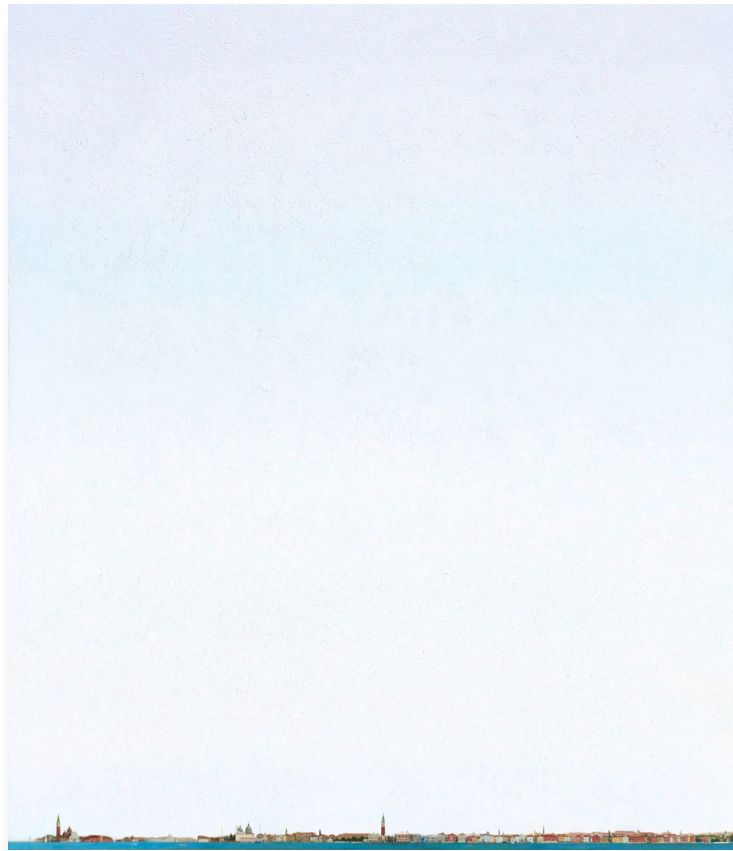
oil on canvas

16 x 24 inches (40.5 x 61 cm)

# CHRISTOPHER CUTTS GALLERY



north gallery, south wall



DAISUKE TAKEYA

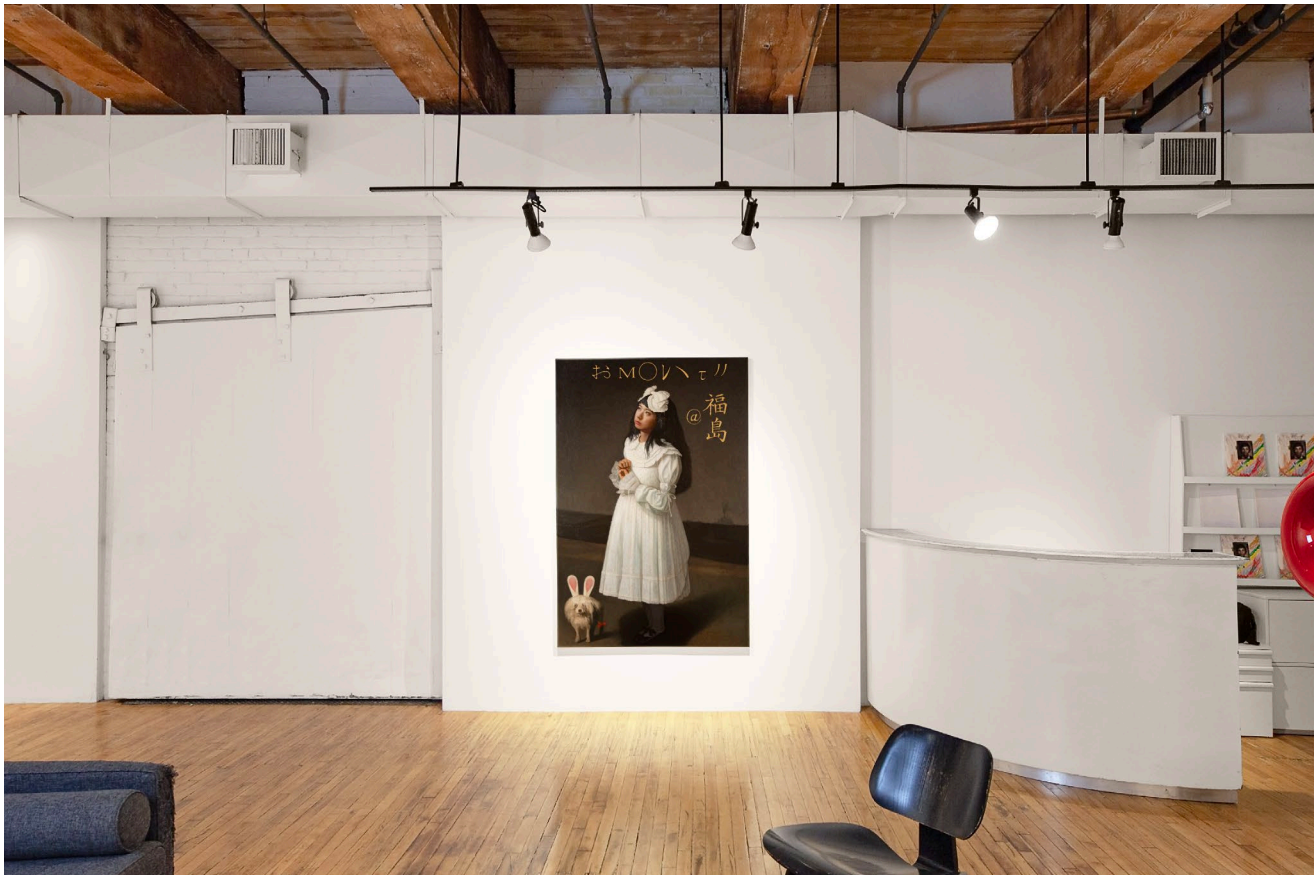
*Venice (homage to Yayoi Kusama's 1959 painting no. 2)*

2010

oil on canvas

84 x 72 inches (213.4 x 182.9 cm)

# CHRISTOPHER CUTTS GALLERY



north gallery, west wall



DAISUKE TAKEYA  
*Memoir of Fukushima*  
2016  
oil on canvas  
72 x 48 inches (182.9 x 121.9 cm)